

# **COMPRESSION FITTINGS NICKEL-PLATED BRASS**

**PLUS**

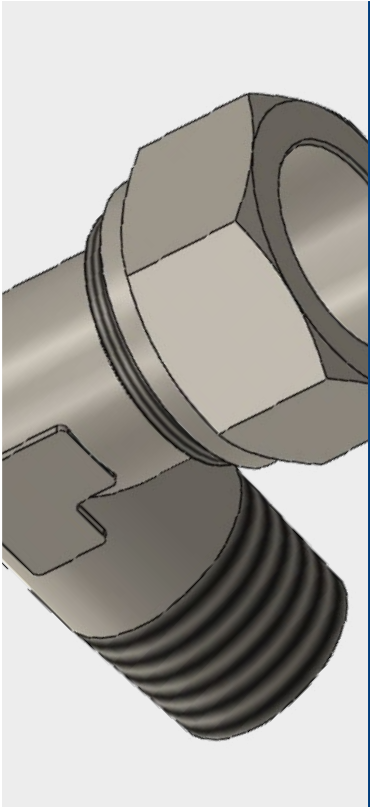
**EXCELLENT GRIPPING SYSTEM  
THANKS TO THE COMPRESSION OF  
THE TUBE ON THE OGIVE RING**

**RESISTANT TO VIBRATIONS AND TO  
WATER HAMMERS**

**SUITABLE WITH AIR AND OIL**

**POSSIBILITY TO CONNECT TUBES  
OF DIFFERENT MATERIALS, EVEN  
PLASTICS, THANKS TO THE  
INTERNAL SUPPORT BUSH**

p. 184 / **3100**p. 184 / **3120**p. 185 / **3130**p. 185 / **3140**p. 186 / **3150**p. 186 / **3160**p. 186 / **3170**p. 187 / **3180**p. 187 / **3190**p. 187 / **3200**p. 188 / **3210**p. 188 / **3230**p. 188 / **3240**p. 189 / **3250**p. 189 / **1176**



-20°C ÷ +80°C  
The working temperature is determined by the features of the tube used



**Working pressure:**  
Up to 60 Bar  
The max working pressure is determined by the features of the tube used



Compressed air, oil and fluids suitable with construction materials



- Taper gas BSPT ISO 7 from R1/8" to R1/2"
- Parallel gas BSPP ISO 228 from G1/8" to G1/2"



**Metal tubes:** brass, copper, stainless steel and aluminum  
**Plastic tubes:** using support bush 3250: Polyethylene PE, Polyamide PA, PTFE, FEP (3250)



**Body:** Turning - nickel-plated brass UNI EN 12164 CW614N  
Hot forging & machining - nickel-plated brass  
**Lock nut:** Nickel-plated brass UNI EN 12164 CW614N  
**Ogive:** Yellow brass UNI EN 12164 CW 614N

SILICONE FREE

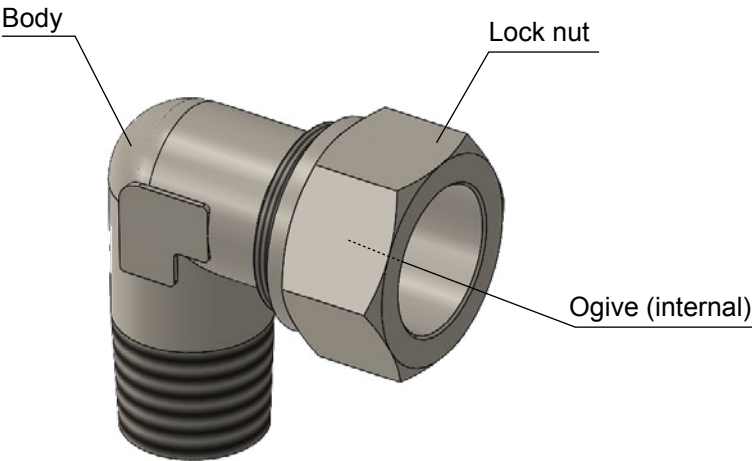


Products in compliance with EC Regulation 1907/2006



Products in compliance with the directive EU 2015/863

CONSTRUCTION DETAILS



TIGHTENING TORQUE  
TAPER GAS BSPT ISO 7

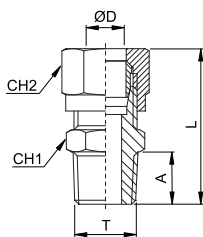
THREAD	1/8"	1/4"	3/8"	1/2"
Nm	8	12	14	16

TIGHTENING TORQUE  
PARALLEL GAS BSPP ISO 228

THREAD	1/8"	1/4"	3/8"	1/2"
Nm	5	8	10	12

## 3100

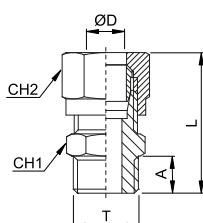
## Male connector BSPT thread



CODE	ØD	T	A	L	CH1	CH2	g
3100TR184	4	R 1/8"	8,0	27,0	10	10	12,0
3100TR186	6	R 1/8"	8,0	28,0	12	12	16,0
3100TR146		R 1/4"	11,0	32,5	14	12	24,0
3100TR188	8	R 1/8"	8,0	29,5	12	14	18,0
3100TR148		R 1/4"	11,0	33,0	14	14	24,0
3100TR388		R 3/8"	11,5	33,0	17	14	36,0
3100TR1410	10	R 1/4"	11,0	37,5	17	19	44,0
3100TR3810		R 3/8"	11,5	38,0	17	19	50,0
3100TR1210		R 1/2"	14,0	40,5	22	19	74,0
3100TR3812	12	R 3/8"	11,5	39,0	19	22	58,0
3100TR1212		R 1/2"	14,0	41,0	22	22	78,0
3100TR1214	14	R 1/2"	14,0	42,5	22	27	102,0
3100TR1215	15	R 1/2"	14,0	42,5	22	27	96,0
3100TR1216	16	R 1/2"	14,0	42,0	24	30	112,0
3100TR1218	18	R 1/2"	14,0	43,0	26	32	126,0

## 3120

## Male connector BSPP thread

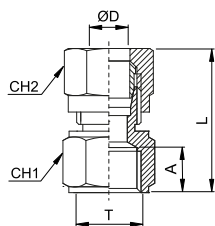


CODE	ØD	T	A	L	CH1	CH2	g
3120TR184	4	G 1/8"	6,0	25,0	14	10	16,0
3120TR186	6	G 1/8"	6,0	26,0	14	12	16,0
3120TR146		G 1/4"	8,0	29,5	17	12	24,0
3120TR188	8	G 1/8"	6,0	27,5	14	14	18,0
3120TR148		G 1/4"	8,0	30,0	17	14	28,0
3120TR388		G 3/8"	9,0	30,5	19	14	34,0
3120TR1410	10	G 1/4"	8,0	34,5	17	19	44,0
3120TR3810		G 3/8"	9,0	36,0	19	19	50,0



## 3130

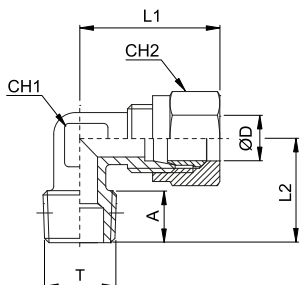
## Female connector BSPP thread



CODE	ØD	T	A	L	CH1	CH2	g
3130TR184	4	G 1/8"	8,0	24,5	14	10	16,0
3130TR186	6	G 1/8"	8,0	26,0	14	12	17,0
3130TR146		G 1/4"	11,0	30,5	17	12	26,0
3130TR188	8	G 1/8"	8,0	26,5	14	14	20,0
3130TR148		G 1/4"	11,0	31,0	17	14	28,0
3130TR388		G 3/8"	11,5	31,0	20	14	32,0
3130TR1410	10	G 1/4"	11,0	35,5	17	19	46,0
3130TR3810		G 3/8"	11,5	36,5	20	19	50,0
3130TR3812	12	G 3/8"	11,5	37,0	20	22	58,0
3130TR1212		G 1/2"	15,0	38,5	24	22	70,0
3130TR1214	14	G 1/2"	15,0	40,0	24	27	98,0
3130TR1215	15	G 1/2"	15,0	40,5	24	27	94,0
3130TR1216	16	G 1/2"	16,0	41,5	24	30	110,0
3130TR1218	18	G 1/2"	16,0	43,0	24	32	134,0

## 3140

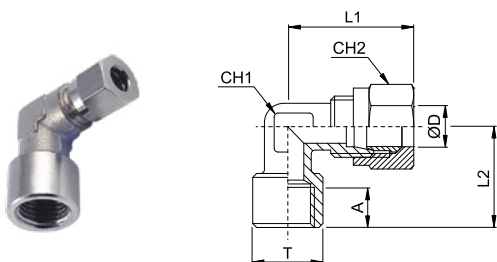
## Male elbow BSPT thread



CODE	ØD	T	A	L1	L2	CH1	CH2	g
3140TR184	4	R 1/8"	8,0	21,0	16,0	9	10	14,0
3140TR186	6	R 1/8"	8,0	22,0	16,0	9	12	16,0
3140TR146		R 1/4"	11,0	24,5	20,0	11	12	24,0
3140TR188	8	R 1/8"	8,0	24,0	17,0	11	14	22,0
3140TR148		R 1/4"	11,0	24,0	20,0	11	14	26,0
3140TR388		R 3/8"	11,5	27,0	24,0	13	14	36,0
3140TR1410	10	R 1/4"	11,0	32,0	23,5	13	19	48,0
3140TR3810		R 3/8"	11,5	32,0	24,0	13	19	52,0
3140TR1210		R 1/2"	14,0	34,0	28,5	15	19	66,0
3140TR3812	12	R 3/8"	11,5	34,5	25,5	15	22	69,0
3140TR1212		R 1/2"	14,0	34,5	28,5	15	22	74,0
3140TR1214	14	R 1/2"	14,0	38,0	30,0	17	27	106,0
3140TR1215	15	R 1/2"	14,0	38,0	30,0	17	27	100,0
3140TR1216	16	R 1/2"	14,0	39,5	31,5	19	30	124,0
3140TR1218	18	R 1/2"	14,0	44,0	34,0	22	32	156,0

## 3150

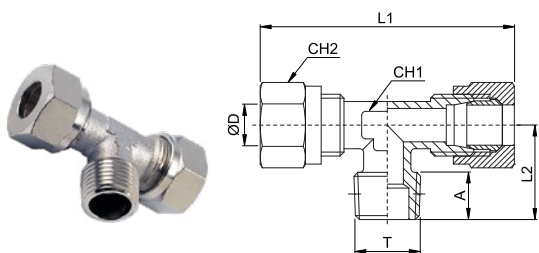
## Female elbow BSPP thread



CODE	ØD	T	A	L1	L2	CH1	CH2	g
3150TR184	4	G 1/8"	8,0	22,0	20,0	9	10	18,0
3150TR186	6	G 1/8"	8,0	24,0	20,0	9	12	20,0
3150TR146		G 1/4"	11,0	27,0	25,5	13	12	39,0
3150TR188	8	G 1/8"	8,0	24,0	20,0	11	14	26,0
3150TR148		G 1/4"	11,0	27,5	25,5	13	14	40,0

## 3160

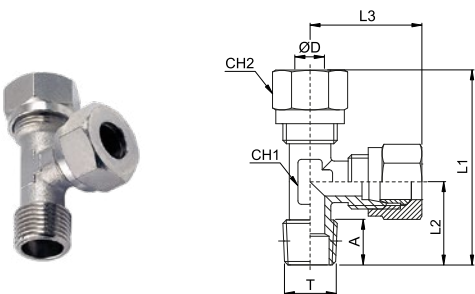
## Male tee BSPT thread



CODE	ØD	T	A	L1	L2	CH1	CH2	g
3160TR184	4	R 1/8"	8,0	42,0	16,0	9	10	22,0
3160TR186	6	R 1/8"	8,0	46,0	16,0	9	12	26,0
3160TR146		R 1/4"	11,0	48,0	20,0	11	12	34,0
3160TR188	8	R 1/8"	8,0	48,0	17,0	11	14	34,0
3160TR148		R 1/4"	11,0	48,0	20,0	11	14	38,0
3160TR388	10	R 3/8"	11,5	54,0	24,0	13	14	52,0
3160TR1410		R 1/4"	11,0	64,0	23,5	13	19	80,0
3160TR3810	12	R 3/8"	11,5	64,0	24,0	13	19	84,0
3160TR3812		R 3/8"	11,5	69,0	25,5	15	22	108,0
3160TR1212	14	R 1/2"	14,0	69,0	28,5	15	22	118,0
3160TR1214		R 1/2"	14,0	76,0	30,0	17	27	176,0
3160TR1215	15	R 1/2"	14,0	76,0	30,0	17	27	170,0
3160TR1216	16	R 1/2"	14,0	79,0	31,5	19	30	212,0
3160TR1218	18	R 1/2"	14,0	88,0	34,0	22	32	256,0

## 3170

## Lateral male tee BSPT thread

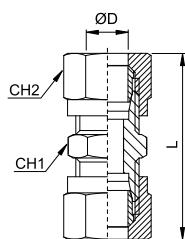


CODE	ØD	T	A	L1	L2	L3	CH1	CH2	g
3170TR184	4	R 1/8"	8,0	37,0	16,0	21,0	9	10	22,0
3170TR186	6	R 1/8"	8,0	39,0	16,0	23,0	9	10	26,0
3170TR146		R 1/4"	11,0	44,5	20,0	24,5	11	12	34,0
3170TR188	8	R 1/8"	8,0	41,0	17,0	24,0	11	14	34,0
3170TR148		R 1/4"	11,0	44,0	20,0	24,0	11	14	38,0
3170TR388	10	R 3/8"	11,5	51,0	24,0	27,0	13	14	52,0
3170TR1410		R 1/4"	11,0	55,5	23,5	32,0	13	19	80,0
3170TR3810	12	R 3/8"	11,5	56,0	24,0	32,0	13	19	84,0
3170TR3812		R 3/8"	11,5	60,0	25,5	34,5	15	22	110,0
3170TR1212	14	R 1/2"	14,0	63,0	28,5	34,5	15	22	118,0
3170TR1214		R 1/2"	14,0	68,0	30,0	38,0	17	27	176,0
3170TR1215	15	R 1/2"	14,0	68,0	30,0	38,0	17	27	170,0
3170TR1216	16	R 1/2"	14,0	71,0	31,5	39,5	19	30	210,0
3170TR1218	18	R 1/2"	14,0	78,0	34,0	44,0	22	32	256,0



## 3180

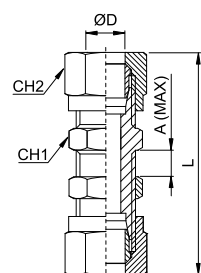
## Union connector



CODE	ØD	L	CH1	CH2	g
3180TR4	4	33,5	10	10	16,0
3180TR6	6	36,5	12	12	25,0
3180TR8	8	38,5	14	14	28,0
3180TR10	10	47,5	17	19	66,0
3180TR12	12	50,5	19	22	93,0
3180TR14	14	55,5	24	27	148,0
3180TR15	15	55,5	24	27	140,0
3180TR16	16	58,0	24	30	177,0
3180TR18	18	60,0	26	32	198,0

## 3190

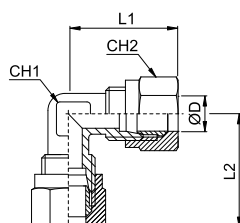
## Bulkhead connector



CODE	ØD	T	A MAX	L	CH1	CH2	g
3190TR6	6	M10x1	15,5	51,5	14	12	32,0
3190TR8	8	M12x1	16,5	55,5	16	14	42,0
3190TR10	10	M16x1,5	15,5	62,5	19	19	90,0
3190TR12	12	M18x1,5	16,0	64,5	22	22	116,0
3190TR14	14	M22x1,5	18,0	69,5	25	27	192,0
3190TR15	15	M22x1,5	18,0	69,5	25	27	184,0

## 3200

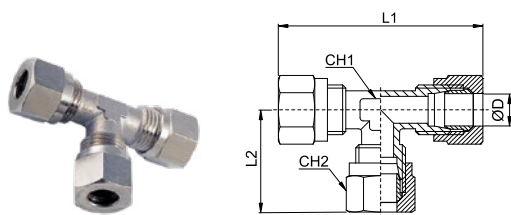
## Union elbow



CODE	ØD	L1	L2	CH1	CH2	g
3200TR4	4	21,0	21,0	9	10	18,0
3200TR6	6	23,0	23,0	9	12	22,0
3200TR8	8	24,0	24,0	11	14	30,0
3200TR10	10	32,0	32,0	13	19	70,0
3200TR12	12	34,5	34,5	15	22	94,0
3200TR14	14	38,0	38,0	17	27	152,0
3200TR15	15	38,0	38,0	17	27	144,0
3200TR16	16	39,5	39,5	19	30	186,0
3200TR18	18	44,0	44,0	22	32	228,0

## 3210

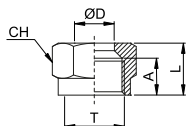
## Union tee



CODE	ØD	L1	L2	CH1	CH2	g
3210TR4	4	42,0	21,0	9	10	26,0
3210TR6	6	46,0	23,0	9	12	30,0
3210TR8	8	48,0	24,0	11	14	42,0
3210TR10	10	64,0	32,0	13	19	102,0
3210TR12	12	69,0	34,5	15	22	136,0
3210TR14	14	76,0	38,0	17	27	226,0
3210TR15	15	76,0	38,0	17	27	208,0
3210TR16	16	79,0	39,5	19	30	272,0
3210TR18	18	88,0	44,0	22	32	330,0

## 3230

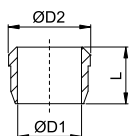
## Locking nut



CODE	ØD	T	A	L	CH	g
3230TRM814	4	M8x1	7,5	11,0	10	4,2
3230TRM1016	6	M10x1	8,5	11,5	12	5,4
3230TRM1218	8	M12x1	9,0	12,0	14	7,0
3230TRM161510	10	M16x1,5	11,5	15,5	19	18,2
3230TRM181512	12	M18x1,5	11,5	15,5	22	25,0
3230TRM221514	14	M22x1,5	12,0	17,5	27	44,3
3230TRM221515	15	M22x1,5	12,0	17,0	27	41,1
3230TRM241516	16	M24x1,5	12,0	17,5	30	55,6
3230TRM261518	18	M26x1,5	12,5	18,5	32	64,2

## 3240

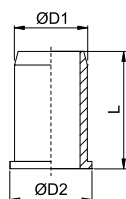
## Ogive



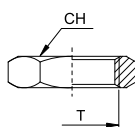
CODE	ØD1	ØD2	L	g
3240TR4	4	6	6,0	0,45
3240TR6	6	8	7,0	0,82
3240TR8	8	10	7,0	1,12
3240TR10	10	13	10,0	3,32
3240TR12	12	15	10,0	3,80
3240TR14	14	17	10,0	4,40
3240TR15	15	18	10,0	4,76
3240TR16	16	19	10,0	5,04
3240TR18	18	21	10,5	5,92





**3250****Internal support bush**

CODE	TUBE ØD	ØD1	ØD2	L	g
3250TR4	4	2,5	3,5	10,0	0,20
3250TR6	6	4,0	5,5	12,0	0,60
3250TR8	8	6,0	7,5	13,0	1,00
3250TR10	10	8,0	9,5	14,0	1,40
3250TR12	12	10,0	11,5	16,0	2,20
3250TR14	14	12,0	13,5	16,0	2,60
3250TR15	15	12,5	14,5	17,0	2,80
3250TR16	16	14,0	15,5	18,0	3,40
3250TR18	18	16,0	17,5	19,0	-

**1176****Bulkhead locking nut**

CODE	T	CH	g
1176TRM101	M10x1	14	3,0
1176TRM121	M12x1	16	3,8
1176TRM1615	M16x1,5	19	5,0
1176TRM1815	M18x1,5	22	7,0
1176TRM2215	M22x1,5	25	17,0

